

**ELIZABETH BOWERS ZAMBIA EDUCATION FUND
2020 ANNUAL REPORT**

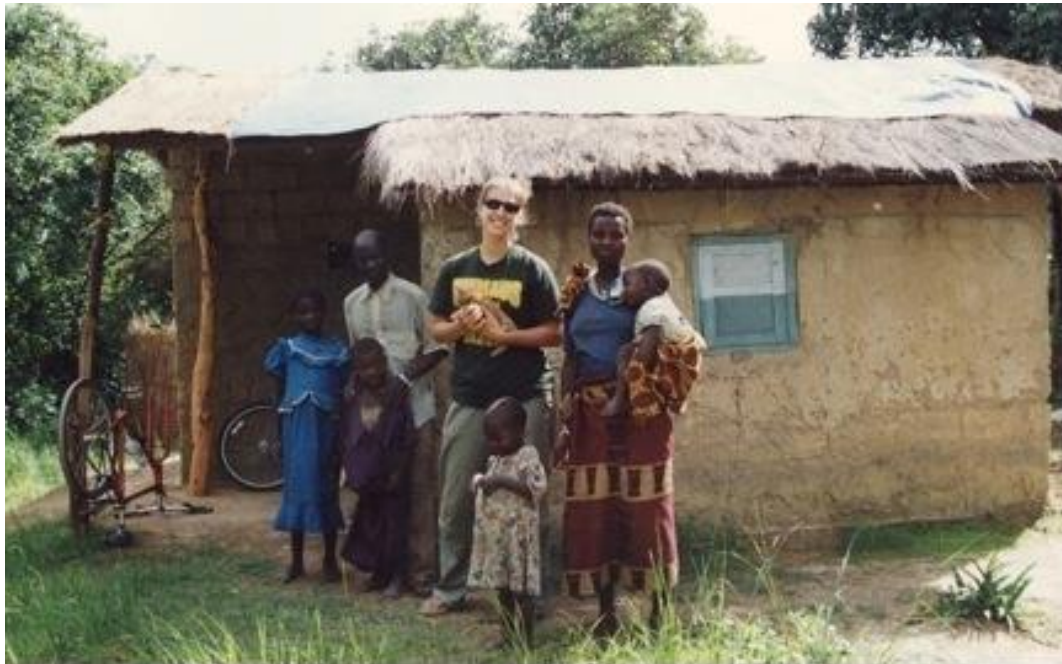


*Breaking the cycle of poverty
through education since 2002*

January 2021

EBZEF VISION

Elizabeth Rachel Bowers (1979–2002) shared her compassionate spirit with the people of Lumwana West, Zambia, as a Peace Corps volunteer. The education legacy sustains Beth's vision of service and global awareness by empowering young women to build positive change from within, to become leaders and educators, and to improve the quality of life in their communities.



EBZEF MISSION

The mission of the Elizabeth Bowers Zambia Education Fund is to empower women, children, and their community in Lumwana West to break the cycle of poverty through education.

CONTENTS

A CHALLENGING YEAR.....	1
OUR HISTORY	1
BETH’S GIRLS & BETH’S LADIES	1
LUMWANA WEST COMMUNITY.....	4
LUMWANA WEST MEMORIAL LIBRARY	4
SECONDARY SCHOOL.....	5
PRESCHOOL.....	6
COMMUNITY SUPPORT.....	6
ADMINISTRATION.....	7
FINANCIAL STATUS.....	7
FUNDRAISING.....	7
COMMUNICATIONS.....	8
BOARD OF DIRECTORS.....	8
EBZEF COMMITTEES.....	8
EBZEF PARTNERS.....	9
LOOKING FORWARD TO 2021.....	9
ATTACHMENT A.....	10
EBZEF BOARD OF DIRECTORS.....	10
ADVISORY BOARD.....	10
ATTACHMENT B.....	11
EBZEF COMMITTEES.....	11
Executive Committee, Linda Bowers, chair.....	11
Finance Committee, Kathy Ellis-Kelemen, chair.....	11
Education Committee, Angela Wanak, chair.....	11
Grant Committee, Linda Bowers/Karen Chittick, co-chairs.....	11
Fundraising/Advisory Committee, Linda Bowers, chair.....	11
Library Committee, Karen Chittick, chair.....	12
Technology Committee, Michal Wert, chair.....	12
Intercultural Advisory Committee, Fordson Kafweku/Dan Irvine, co-chairs.....	12
ATTACHMENT C.....	13
EBZEF PARTNERS.....	13

HIGHLIGHTS

EDUCATION

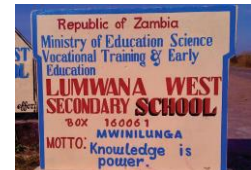
314 GIRLS received secondary school scholarships from 2003-2014

35 GIRLS received college and vocational training scholarships

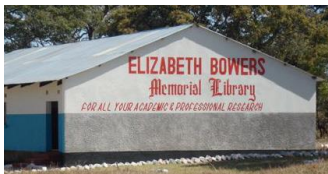


95 PRESCHOOL CHILDREN enjoyed programs in 2020

GRADES 9-12 OFFERED in Lumwana West since 2016



BUILDINGS



LARGEST LIBRARY in the Northwest Province, furnished and with over 22,000 books, electricity, and computers

3 FURNISHED PRESCHOOL CLASSROOMS with new playground equipment in 2020



6 FURNISHED CLASSROOMS with 3 more classrooms funded for 2021

3 CLASSROOM SCIENCE LAB almost complete

2 TEACHERS' DUPLEX HOUSES with 3rd funded for 2021



COMMUNITY SUPPORT



COMMUNITY WELL, GIRLS BATHROOM AND DRAINFIELD

LIBRARIAN & 2 PRESCHOOL AIDE salaries to provide jobs for Beth's Girls as community role models



THANK YOU FOR YOUR CONTINUED SUPPORT!
Over \$60,000 donated in 2020

A CHALLENGING YEAR



Wert forest fire
Newberg, OR

This was a challenging year for all of us. The Covid-19 pandemic closed schools throughout Zambia and Beth's Girls missed their first term classes. Although this was difficult for our girls, it helped bridge funding for college/vocational classes with so many students in their final year. Fortunately, Lumwana West had no major coronavirus outbreaks. EBZEF continued with virtual meetings and everyone stayed home.

Wildfires were extreme and widespread. The Bowers farm was intact but heavy smoke and ash kept us indoors. Advisory Board member Michal Wert had several acres of forest burn but their home and most of their property was spared.



Sky fire over Bowers
Farm Salem, OR

OUR HISTORY



Elizabeth Bowers
1979-2002

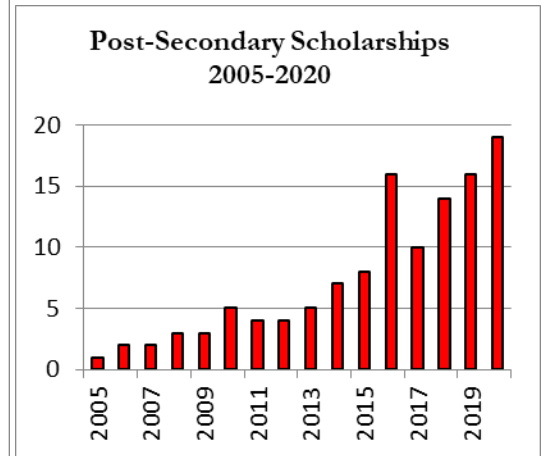
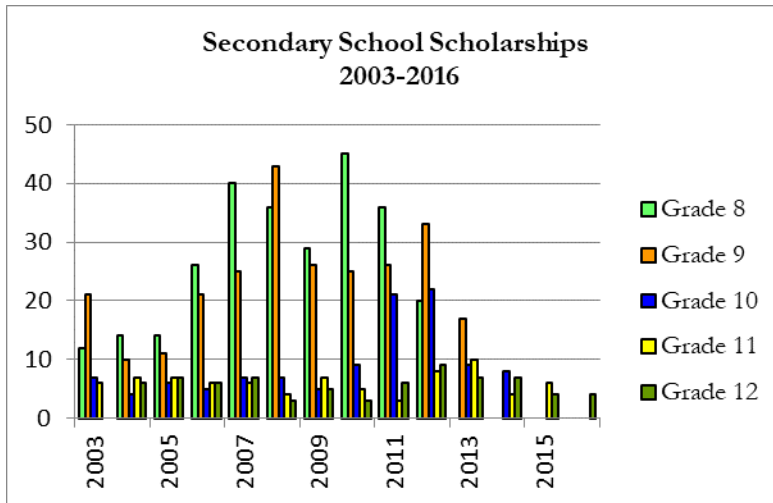
In honor of Elizabeth Bowers, family and friends started a scholarship program for Lumwana West girls in 2003. A graduate of Earlham College, Beth served as a Peace Corps Volunteer in remote Lumwana West, in NW Zambia, Africa. She died as the result of a bicycle accident in 2002. In addition to her legacy in Lumwana West, Beth's organs and tissues enriched the lives of more than 23 people in Zambia

The Elizabeth Bowers Zambia Education Fund (EBZEF) was established in 2007 as a 501(c)(3) public charity under the laws of the State of Oregon. EBZEF's scholarships fulfilled Beth's wish of educating the girls and supporting the community that she came to know and love.

BETH'S GIRLS & BETH'S LADIES

Prior to 2003, few girls from Lumwana West could access the expensive boarding schools in the area that provided secondary education. Since then, EBZEF has provided secondary school scholarships for 314 Lumwana West girls. The girls call themselves "Beth's Girls." In 2013, with support from the community, EBZEF began phasing out scholarships and focused on bringing a secondary school to Lumwana West. All Beth's Girls currently in the system were supported through grade 12 and secondary school scholarships ended in 2016. College and vocational school scholarships continue to be offered to Beth's Girls to complete their educational goals. Post-secondary graduates call themselves "Beth's Ladies."

The EBZEF family is proud of the accomplishments of Beth's Girls and Beth's Ladies. In 2020, 19 women were sponsored for college/vocational school. So far, 35 Beth's Girls are supported or have graduated from college or vocational school.



Executive Director Linda Bowers communicates with girls on scholarship on WhatsApp, to understand the needs of each student and to encourage them to share their progress with donors. She reminds them of their commitment to give back to their community and to be role models for other girls in Lumwana West and Zambia.

In early 2020, Zambia schools and colleges closed due to the coronavirus and Beth’s Girls could not complete Term #1. Some programs were online, but those originally scheduled to complete coursework in 2020 will carry over into 2021 and graduations will be delayed accordingly. As Term #2 began, EBZEF resumed tuition payments on an individual basis.

The following girls received scholarships in 2020 for higher education or training:

- **Visaka Kapalu** completed year 5 of 7 in the Bachelor of Medicine and Surgery Degree Program at Lusaka Apex Medical University where she is studying to be a doctor.
- **Christabel Sweta** is in year 4 of 4 at Evelyn Hone College of Pharmacy.
- **Belinda Kalumba** and **Jean Mutepeka** are preschool teacher’s aides in Lumwana West. They are in year 3 of 3 at Zambia College of Education studying Early Childhood Education. Both will graduate with significant teaching experience.
- **Stella Masanyinga** is in year 3 of 3 at Fairview College of Education. She dropped out due to illness and childbirth, but is now back to complete studies to become a teacher.



Visaka



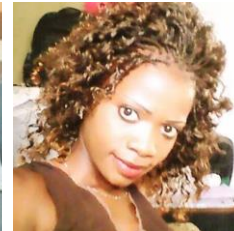
Christabel



Belinda



Jean



Stella

- **Gloria Njolomba, Kareen Sweta, and Florence Lubeba** are in year 3 of a 3-year program at Solwezi Teacher Training College. Gloria’s major is social studies, Kareen primary education, and Florence secondary education.
- **Joy Salumawu** is in year 3 of 3 studying to be a registered nurse at Eden U.
- **Mulenga Chilufya** is in year 3 of a 3-year registered nurse training program at Northwestern University.

“Thank you for the support you are giving me. If it hadn’t been for you, I would be nothing. My parents couldn’t have made it possible for me to be in university.”
 Mulenga Chilufya



Gloria Kareen Florence Joy Mulenga

- **Caren Kabulayi, Lucy Mutepuka and Gracious Chilumbwe** are in year 2 of 3 at Northwestern University College of Health & Applied Science. Caren is studying clinical medicine; Lucy and Gracious are studying nursing.
- **Rebecca Lubeba** is in year 2 of 3 studying welding at Solwezi Technical Trade School. **Margret Kambili** is in year 2 of 4 studying electrical engineering at the Trade School.

“I appreciate your support because it’s not easy to sponsor someone you don’t know. To Beth’s Girls who are done with school and now working, you can do the same for your young sisters so they have bright futures like you.”
 Margret Kambili



Caren Lucy Gracious Rebecca Margret

- **Priscovia Sangenjo** is in year 3 of 4 at Chalimbana University studying for a BS in English & Civic Education. She is a secondary school teacher in Lumwana West.
- **Anipher Mbimbi** is in year 1 of 3 studying Clinical Medicine at Eden University.
- **Kerron Chilumbwe** is in year 1 of 3 at Ndola Nursing School.
- **Thelma Sambaulu** is in year 1 of 4 studying nursing at Oak University.



Priscovia Anipher Kerron Thelma

Fridah Sakuwunda completed her work at Paglory University studying Early Childhood Development. While she waits to graduate and to be hired by the MOE, she is teaching at the Lumwana West Preschool “giving back” to her community.

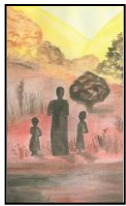
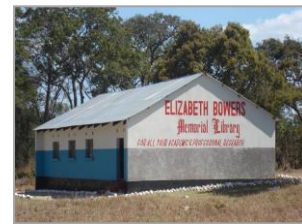


Mary Lundeba, PhD, was Beth’s Peace Corps aquaculture trainer and was EBZEF’s first scholarship recipient. She works with WorldFish Zambia to expand rural fish-farming. She reports, “WorldFish is making efforts to decentralize fish seed production and supply among smallholder farmers to improve on accessibility and availability of seed. We are training smallholder hatchery operators in various communities.” Mary is making a huge difference in Zambia’s aquaculture program.

LUMWANA WEST COMMUNITY

LUMWANA WEST MEMORIAL LIBRARY

The first building supported by EBZEF was the Elizabeth Bowers Memorial Library, completed in 2009. It is a source of pride for Lumwana West, constructed by villagers with local materials, managed by Peace Corps Partnership, and funded by donations in memory of Beth. It belongs to and is managed by the community with on-going EBZEF support. The Library provides a community gathering center, children’s book corner, general study space, and daily newspapers. Solar panels provide electricity to run computers and printers for use by the community. It boasts African and Women’s sections among its 22,000 books.



Librarian **Sandra Kamulosu**, who studied Library Science with an EBZEF scholarship, organized a program to preserve Lunda tribal lore and contemporary culture. Supported by grants from the **Columbia River Peace Corps Association** and the **EBZEF Library Committee**, stories are being written by local authors of all ages. They will be illustrated with texts, translated into English, and printed for Memorial Library display as dual language books. Copies will also be posted on EBZEF’s website. Inspired by EBZEF’s work in Lumwana West, **Mpoli Simwanza-Johnson** from Texas donated copies of her father’s book “In Short” to the Memorial Library. Mr. Kawala A. K. Simwanza’s short stories are good examples of recording one’s own family history.

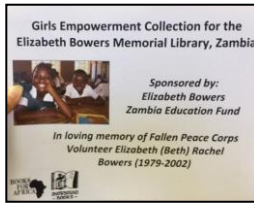
At Librarian Sandra Kamulosu’s request, EBZEF sent a half-pallet of texts on leadership, business, and economics. A grant from **Salem Rotary’s Literacy Committee** will cover transportation costs.

“On behalf of the Lumwana West Community, thank you so much for the books sent to us. Especially for the management and leadership books which so many readers were looking for. The books have made a great impact to our library. Now the library has been updated with some of the latest books.”

Librarian Kamulosu

“This is a wonderful collection! They are very, very good books.”

Mbongo Njolomba



Books for Africa donated a Girls’ Empowerment collection of 35 new books which appeal to girls at all education levels. Each book includes a memorial bookplate remembering Beth. EBZEF congratulates Books for Africa on celebrating its 50 millionth book delivered to Africa, serving all 55 African countries since 1988.

SECONDARY SCHOOL

After years of sending grade 7-12 students to distant boarding schools, in 2016 Lumwana West received full authorization from the Zambia Ministry of Education (MOE) to teach grades 1 through 12. All children in the village could now complete school without the large expense and dangers of attending a distant boarding school for high school.

Overcrowding has been a problem because the new secondary school program quickly drew students from around the area. With EBZEF funding and **World Vision Zambia** construction management, the Lumwana West secondary school complex currently contains two blocks of three classrooms each, a girl’s lavatory with septic tank and drainfield, running water, solar panels to run the well pump, and two teachers’ houses.

Engineers Without Borders has worked with EBZEF and the community since 2013 building a three-classroom science lab. Almost finished, EWB had to replace the roof which was blown off in a strong windstorm in 2019. EBZEF Director **Linda Bowers** donated a 3-classroom block funded by a personal medical settlement. When these two projects are completed, the secondary school in Lumwana West will have a total of 12 classrooms. A boy’s lavatory with septic tank and drainfield are still needed.

“We now have an average of 90 students per classroom. Grade 12 has an enrollment of 104, grade 11 has 96, grade 10 has 87, grade 9 has 82, and grade 8 has 102 pupils. In a classroom space designed for 270 students for six classrooms, we now have 471 students with an unbelievable 201 excess students.”

As headteacher, my vision is we should have only enough students in our classrooms (45) to guarantee quality teaching and learning. EBZEF is striving to make this vision a reality by constructing more classrooms and staff houses.”

Mr. Mbongo Njolomba
Secondary School Headmaster

“The housing situation at Lumwana West Secondary School is worrying. Only seven out of fourteen teachers are accommodated. The rest are squatting in deplorable rental structures in the village.”
Mbongo Njolomba

Teachers’ housing for the secondary school is needed before the MOE will assign teachers to this remote rural community. EBZEF supported construction of a duplex which is now occupied by a computer science/business studies teacher and a mathematics teacher. A second duplex is almost complete and a third is funded, housing a total of 6 teachers. The goal is to provide 4 duplex houses for 8 single teachers and 6 houses for married teachers with families.



Teacher’s duplex

The housing project will proceed as funds are available.

PRESCHOOL

The preschool was started in 2012. At the beginning of 2020, 38 children went on to first grade. The preschool closed in March because of coronavirus and reopened on September 21. The returning 45 boys and 50 girls work in groups of 15 pupils per session.



Preschool slide,
merry-go-round,
swings



The **Schirle Elementary School Penny Drive** helped fund programs and playground equipment for the preschool. They raised \$1,158.47 from their 2020 “Children Helping Children” campaign.

The preschool purchased a solar collector with battery and inverter, a desktop computer, and a printer/scanner so they can create their own materials. EBZEF Library Committee member **Alice French** donated funds in honor of her aunt **Frances Cooper**, a life-long educator who passed away at the age of 102. Teacher’s Aide Belindah Kalumba was chosen to go to Kabwe to be trained to teach preschool students.

“It is so exciting! Everyone is talking about these wonderful things, which have never been seen in this community! Parents and teachers are very happy and send their gratitude to the sponsors. Most of the learners’ activities are based on play. They develop motor and manipulative skills which are used in children’s day-to-day life.”

Ireen Sandu
Basic School Headmistress

Basic School Headmistress Ireen Sandu graduated from the University of Africa in November with a Bachelor of Technology in Education Management. EBZEF was proud to support Ireen in her studies.



COMMUNITY SUPPORT

Potable water is the primary need in rural Zambia for domestic consumption, agriculture, and sanitation. The community water system was funded by EBZEF and installed by World Vision Zambia in 2018 and deepened in 2019. Managed by the Lumwana West Community Water Committee, it supplies water to staff houses and classrooms at the primary and secondary schools, the girls’ lavatories, and the nearby rural health clinic.

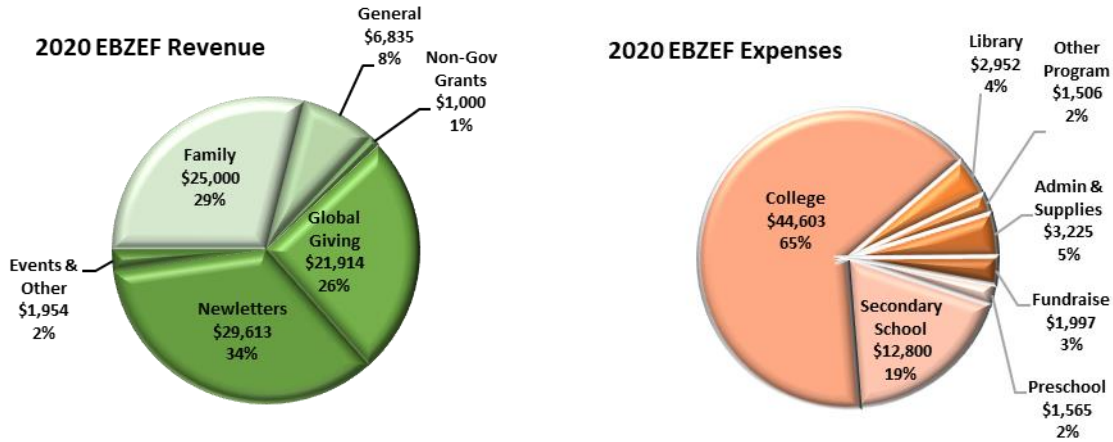


EBZEF facilitated a partnership for Lumwana West with India-based Greenway Stoves. The stoves offer higher combustion efficiency for shorter cooking time, reducing fuel use by half with significantly lower carbon emissions. Stoves are free for the cost of transportation from Lusaka. They can be sold to the community for a nominal fee to support construction of teachers’ houses.

ADMINISTRATION

FINANCIAL STATUS

EBZEF is a volunteer organization that invests in education and community programs in Lumwana West. The following graphs show the amount of revenue and expenses in 2020. Public funds provided 71 percent of revenue, with 25 percent donated by Beth's family. Forty-two percent of total revenue came from you, our generous donors.



Program-related expenses made up 92 percent of expenditures. These included investments in new school buildings, furnishings, and supporting facilities; college/trade school scholarships for Beth's Girls; librarian and part of night watchman salaries; subscriptions, purchase of textbooks and equipment for the library; and salaries for preschool teacher's aides. Beth's family absorbed the 8 percent of expenses for administrative costs, including supplies and fundraising. A statement of 2020 financial activities is available upon request.

FUNDRAISING

Individual donations continue to be the major source of support for EBZEF's programs. Fund-raising targets for 2020 included \$140,000 for two 3-classroom blocks and \$31,750 for a boys' lavatory, for a total cost of \$171,750. PayPal checkout is now available to donate on the EBZEF website.

To expand our base, EBZEF sent out carefully researched grant requests advised by a volunteer professional fund-raiser through Social Purpose Works (SPW). SPW is a resource for Portland's nonprofits created to engage those moving toward retirement or pivoting to new careers who want to use their professional skills on small, short-term projects and make a difference. A grant of \$100,000 was received, supported by \$25,000 in matching funds.

EBZEF enjoyed a successful partnership with GlobalGiving (GG), a crowdfunding platform for grassroots charitable projects. With a Superstar rating and a Search Rank of 513 out of 6,560 international organizations, EBZEF raised \$19,365, including over \$3,000 in GG



matching funds. EBZEF was also selected to participate in a Girl Fund campaign. Visit <https://goto.gg/43633> to view the EBZEF project, to access our quarterly reports, and to donate. Recurring monthly donations will be matched by GG after the 4th consecutive donation.

EBZEF works with several companies that share their proceeds with nonprofit organizations. Donations can also be made on the EBZEF website and FaceBook page.

- **AmazonSmile** - www.smile.amazon.com
- **Fred Meyer Community Rewards** - www.fredmeyer.com/topic/community-rewards-frequently-asked-questions
- **GoodSearch and Goodshop** - www.goodsearch.com
- **GuideStar** - www.guidestar.org/profile/71-1001126
- **Network for Good** - www.networkforgood.com
- **PayPal Giving Fund** - www.paypal.com/us/fundraiser/charity/1901999
- **Volunteer Match** - www.volunteermatch.org/search/org314593.jsp
- **Oregon Beverage Recycling Cooperative – BottleDrop Oregon Redemption Center** - <https://bit.ly/ebzefbottle>
- **PayPal Giving Fund** - <https://www.paypal.com/us/fundraiser/charity/1901999>
- **GlobalGiving** - <https://goto.gg/43633>



COMMUNICATIONS

Jennifer Bowers, Beth's sister, manages EBZEF's social media program. She continues to develop easy ways to share Beth's story and to encourage people to be informed, to participate, and to make a difference:

- **EBZEF website** – www.ebzef.org
- **LinkedIn** - www.linkedin.com/groups/4036740
- **Facebook** – www.facebook.com/EBZEF
- **Twitter** – twitter.com/EBZEF
- **Volunteer link** – www.volunteermatch.org

BOARD OF DIRECTORS

The Board provides direction and oversight for the EBZEF program. Because of the coronavirus, in-person meetings were advised against and expanded email updates were provided to the Board of Directors and Advisory Board members on July 17 and August 27. A formal meeting of the EBZEF Board was held virtually on October 10. Members of the Board of Directors and the Advisory Board are listed in Attachment A.

EBZEF COMMITTEES

EBZEF does most of its work through committees of volunteers. A list of committees, their purpose, and accomplishments and efforts in 2020 are included in Appendix B.

EBZEF PARTNERS

EBZEF has been successful because of our many loyal donors and amazing partners. A list of important partners in our programs are included in Appendix B.

LOOKING FORWARD TO 2021

A primary effort in 2021 will be completion of the secondary school construction program, including completion of secondary school classroom blocks, a boys' lavatory and drainfield, and teacher's housing. Higher education scholarships for Beth's Girls will continue to be supported as funding permits. The Library, Preschool, and other community support activities are supported by general donations.

EBZEF hopes to complete its commitment to bring a secondary school program and supporting facilities to the community by the end of 2021. This will have been a substantial effort, resulting in construction of four 3-classroom buildings (12 classrooms), a community water system, lavatories for both girls and boys, and housing for eight single teachers and six married teachers with families. Classroom furnishings and solar panels for electricity will also need to be provided.

With the coronavirus disruption in 2020, the focus was on continuing program and scholarship commitments. Next year we hope to have the conversation on the long-term program for EBZEF, including supporting all Beth's Girls to meet their higher educational aspirations and continuing to support Beth's legacy, the Elizabeth Bowers Memorial Library.

ATTACHMENT A

EBZEF BOARD OF DIRECTORS

Linda O. Bowers, Executive Director
Assoc. Prof. of English (retired)
Willamette University
Salem, OR

Gerard F. Bowers, PhD
Prof. of English (retired)
Willamette University
Salem, OR

Karen Chittick, Secretary
Assoc. Dir., Academic Admin (retired)
Tokyo Int'l University of America
Salem, OR

Daniel E. Irvine
Senior Advisor for External Engagement
World Vision International
Hudson, Florida

Kathy Ellis-Kelemen, Treasurer
CFO, Kelemen Advisory Assoc, LLC
(retired)
Salem, OR

Fordson Kafweku
Former Head of Programs
Plan International S. Sudan
Lusaka, Zambia

ADVISORY BOARD

Cassandra Farrin
Production Editor
Emmett, ID

Angela Wanak
JD/MBA Willamette University
Salem, OR

Bob Kister
Non-profit Communications
Mt. Angel, OR

Michal Wert
Principal, MW Consulting (retired)
Newberg, OR

ATTACHMENT B

EBZEF COMMITTEES

Executive Committee, Linda Bowers, chair

Purpose: Make decisions and act on behalf of EBZEF in emergencies and between Board meetings. Offer direction to the various EBZEF committees in line with the mission, values, and goals of the organization.

The Executive Committee meets prior to each formal Board meeting, to discuss pending issues and to set the agenda. It meets between Board meetings as needed to respond to immediate issues and opportunities. Members of the Executive Committee include Beth's parents Executive Director Linda Bowers and Board Member Gerry Bowers, Secretary Karen Chittick, and Beth's aunt and Advisory Board member Michal Wert.

Finance Committee, Kathy Ellis-Kelemen, chair

Purpose: Keep full and accurate accounts of EBZEF financial records, oversee disbursement of funds, and make regular financial reports to the Board of Directors.

The Finance Committee prepares an annual budget and provides regular financial accounting updates to the Board. **Melhorn & Associates** prepares annual taxes for EBZEF and provides regular bookkeeping reports for the Finance Committee to monitor finances.

Education Committee, Angela Wanak, chair

Purpose: Monitor scholarship recipients, maintain student lists, and provide reports to the Board of Directors.

The Education Committee maintains a list of girls receiving EBZEF scholarships.

Grant Committee, Linda Bowers/Karen Chittick, co-chairs

Purpose: Identify opportunities and oversee grants and scholarships for EBZEF.

The Committee coordinates with the Salem Rotary and other potential grant opportunities. It works closely with the Fundraising/Advisory Committee to develop grant applications.

Fundraising/Advisory Committee, Linda Bowers, chair

Purpose: Develop and implement a fundraising strategy for the Board and volunteers. Oversee publicity and events for EBZEF. Advise the Executive Director on EBZEF activities and opportunities.

The Fundraising/Advisory Committee meets regularly to strategize on raising funds for the secondary school project, and to advise the Director on ongoing issues. Social media consultant Jennifer Bowers supports this Board committee.

Fundraising/Community Events

- **PayPal** has been an effective donation payment method.
- Newsletters are EBZEF's primary fund-raising effort; they were published in May and December 2020.
- Periodic emails are sent to EBZEF donors to update them on new events and to advocate for financial support.
- EBZEF is a member of the **Nonprofit Association of Oregon**.
- EBZEF signed up to receive money from the **Oregon Bottle Drive**. Bar codes on the deposit bags ensure that proceeds are credited to EBZEF's account.
- Linda writes personal "thank you" notes on all letters documenting donations.

Library Committee, Karen Chittick, chair

Purpose: Responsible for oversight of library operations and furnishings, acquisition of books, librarian oversight, library programs and policies, memberships and subscriptions, and general facility maintenance. Also monitors and supports the preschool program.

Memberships, Subscriptions, and Publications

- EBZEF pays for several regular subscriptions for the Memorial Library, including:
 - Three daily newspaper subscriptions
 - National Geographic for Little Kids
 - ResourceMate for use of Library resources
- Early childhood materials provided to Lumwana West include:
 - Encyclopedia Britannica computer program
 - Mavis Beacon Teaches Typing
 - Laminated cardboard keyboards to teach typing

Technology Committee, Michal Wert, chair

Purpose: Investigate opportunities for how technology can improve the quality of life for Lumwana West families.

Jennifer Bowers posts regularly on Facebook, Twitter, and other social media platforms. She maintains and regularly updates the EBZEF website.

Intercultural Advisory Committee, Fordson Kafweku/Dan Irvine, co-chairs

Purpose: Advise the EBZEF Board and Committees to ensure sensitivity and suitability of approaches to programs and to the people of Lumwana West and Zambia.

Dan and Fordson provide valuable insight on all aspects of working with Lumwana West and other partners in Zambia, as well as advising on opportunities for international fundraising.

ATTACHMENT C

EBZEF PARTNERS

EBZEF thanks our many important partners in our programs:

- **Community of Lumwana West** – on-going partner to evaluate scholarship recipients, build the Memorial Library, initiate the preschool, build the science lab, develop the secondary school project, and provide local advice and coordination.
- **Baal Dan Charities** – supported preschool construction. www.baaldan.com.
- **Books for Africa** – donated books and shipping for the Memorial Library. www.booksforafrica.org.
- **Caritas Foundation** – supported shipping books to Zambia. www.claritascreative.com.
- **Columbia River Peace Corps Association** – variety of project grants. www.crpga.org.
- **Engineers Without Borders (EWB) Mid-Columbia Chapter** - working with villagers to construct a 3-classroom science lab. www.ewb-mid-columbia.org.
- **Fort Vancouver Lions Club** – support for the Memorial Library. www.fortvancouverlions.org.
- **GladRags** – donated reusable menstrual pads for Beth’s Girls. www.gladrags.com.
- **GlobalGiving** – crowdfunding for secondary school facilities. www.globalgiving.org.
- **Goodman Family Foundation** – supported the solar power project for the Library. www.goodmanfamilyfoundation.org.
- **Kitwe Zambia Nkana Lions Club** – paid for cataract surgery for two Beth’s Girls. www.e-clubhouse.org/sites/kitwe_nkana.
- **National Solar USA** – supported the solar power project for the Memorial Library. www.natsolar.com.
- **Peace Corps** - Peace Corps Partnership Project helped initiate the scholarship program and oversaw construction of the Memorial Library. www.peacecorps.gov.
- **Salem Rotary Literacy Committee** – Library book grants. www.rotaryclubofsalem.com.
- **Salem Shirle Elementary School** – conduct annual Penny Drives for EBZEF. www.schirle.salkeiz.k12.or.us.
- **Salem Adam Stevens Middle School** – conducted fundraising and educational programs. www.stephens.salkeiz.k12.or.us
- **Shalaby Trust** – supported the Memorial Library.
- **South Salem High School** – sponsored a Zambia Club for fundraising and education. www.southsaxons.com.
- **Willamette University, Atkinson Graduate School of Management** – consulted on program development. www.willamette.edu.
- **Willamette University Pi Beta Phi Sorority** – conducted fundraising and education programs. www.willamette.pibetaphi.org.
- **World Vision USA/International/Zambia** – dispensed Beth’s Girls scholarships locally; helped ship books to the Memorial Library; oversaw construction of the preschool, the secondary school, teacher’s housing, and general infrastructure; and coordinated projects with the Ministry of Education. www.wvi.org.